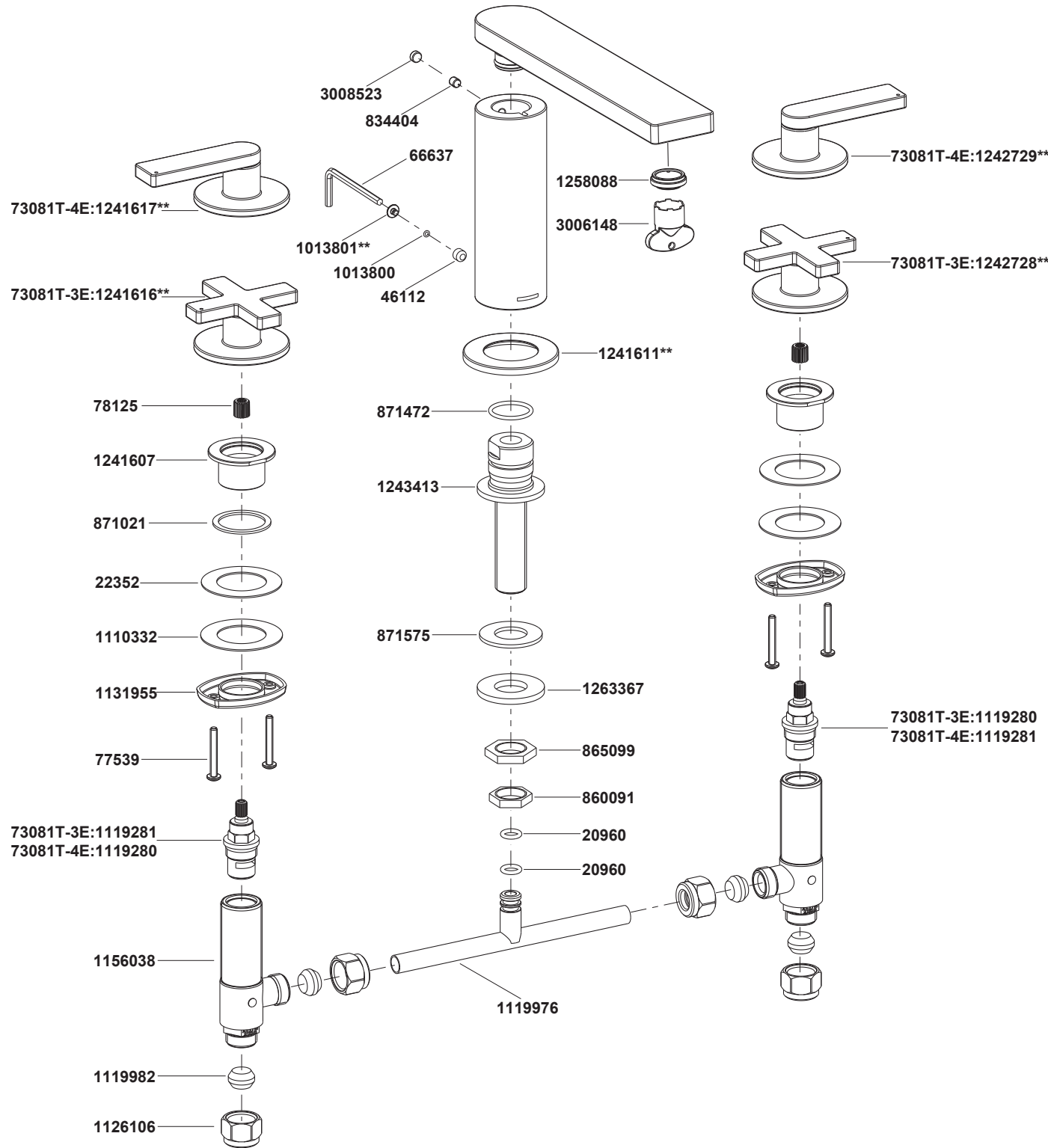


73081T-3E 2 Handle Deck Mount Bath Faucet-Cross Handle  
73081T-4E 2 Handle Deck Mount Bath Faucet-Lever Handle



\*\*Color code must be specified when ordering.

73081T-3E 2 Handle Deck Mount Bath Faucet-Cross Handle  
73081T-4E 2 Handle Deck Mount Bath Faucet-Lever Handle

BEFORE YOU BEGIN

All information is based on the latest product information available at the time of publication. Kohler Co. reserves the right to make changes in product characteristics, packaging, or availability at any time without notice.

Please leave these instructions for the consumer. They contain important information.

NOTES:

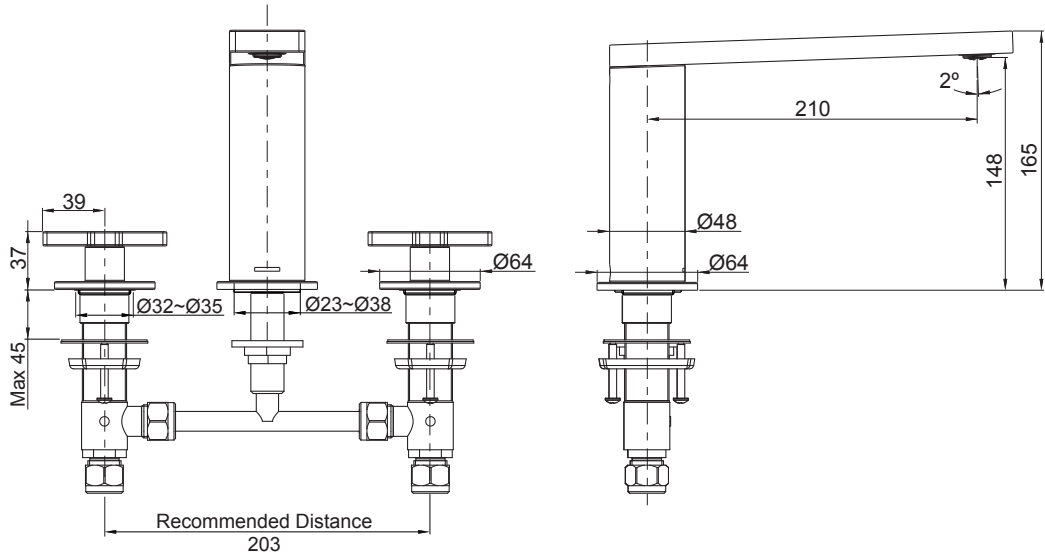
1. Flush the water supply pipes thoroughly to remove debris.
2. An inline water filter must be used with this product.
3. Inspect the supply tubing for damage. Replace as necessary.
4. Observe local plumbing codes.
5. Shut off the water supplies to the fitting. If possible, install this faucet before installing the tub.
6. All installations should comply with the relevant requirements of AS/NZS 3500.

HANDLE OPERATION

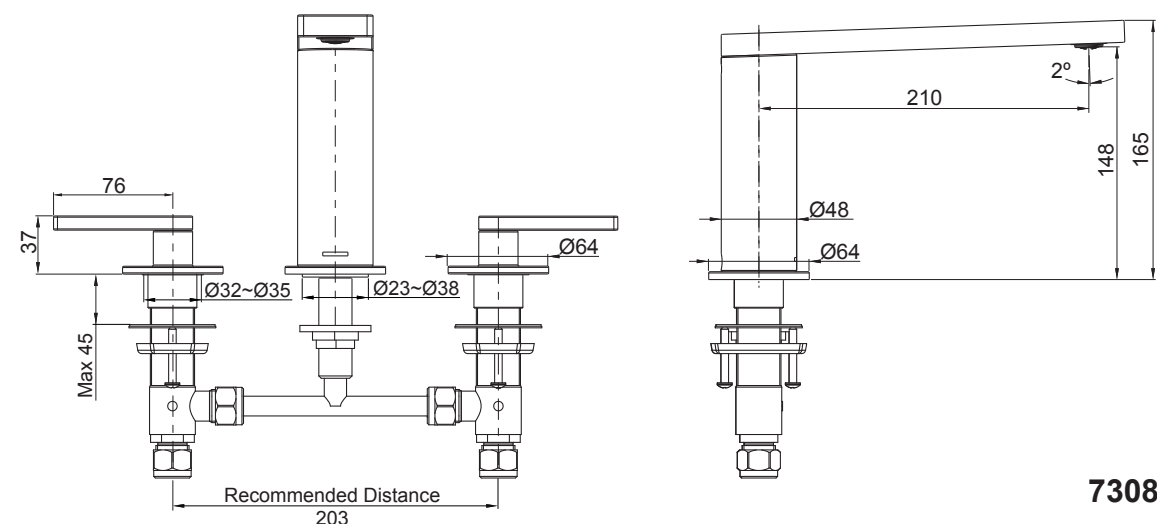
For 73081T-3E, turn on the left handle clockwise for hot water, turn on the right handle counter-clockwise for cold water.

For 73081T-4E, turn on the left handle counter-clockwise for hot water, turn on the right handle clockwise for cold water.

ROUGH-IN DIMENSIONS

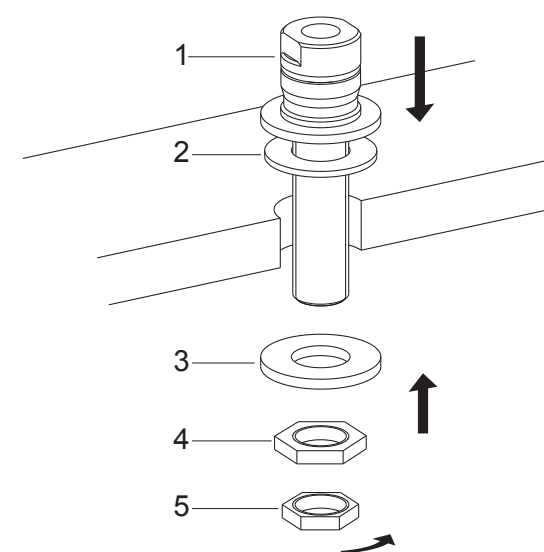


73081T-3E



73081T-4E

## INSTALLATION

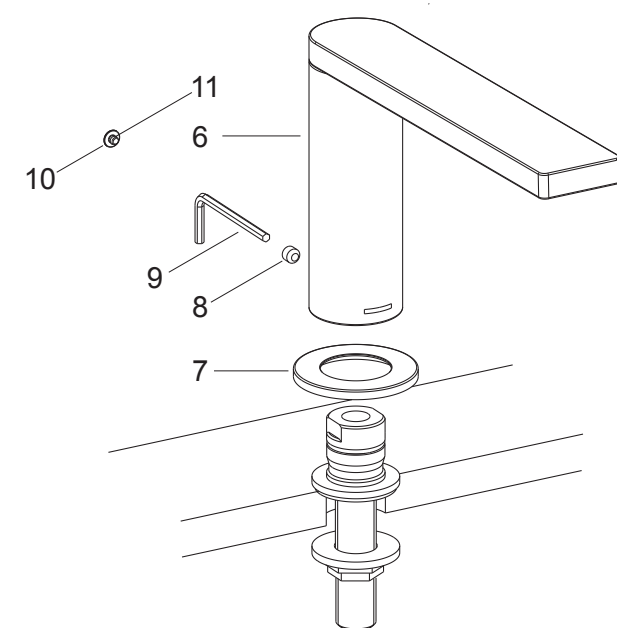


①

### How to Install the Spout

Remove and retain the nuts(5, 4) and washer(3) from the shank(1).

Fit the shank with washer(2) into the center hole of tub. Install the washer(3) and tighten the nut(4, 5) to secure the shank.



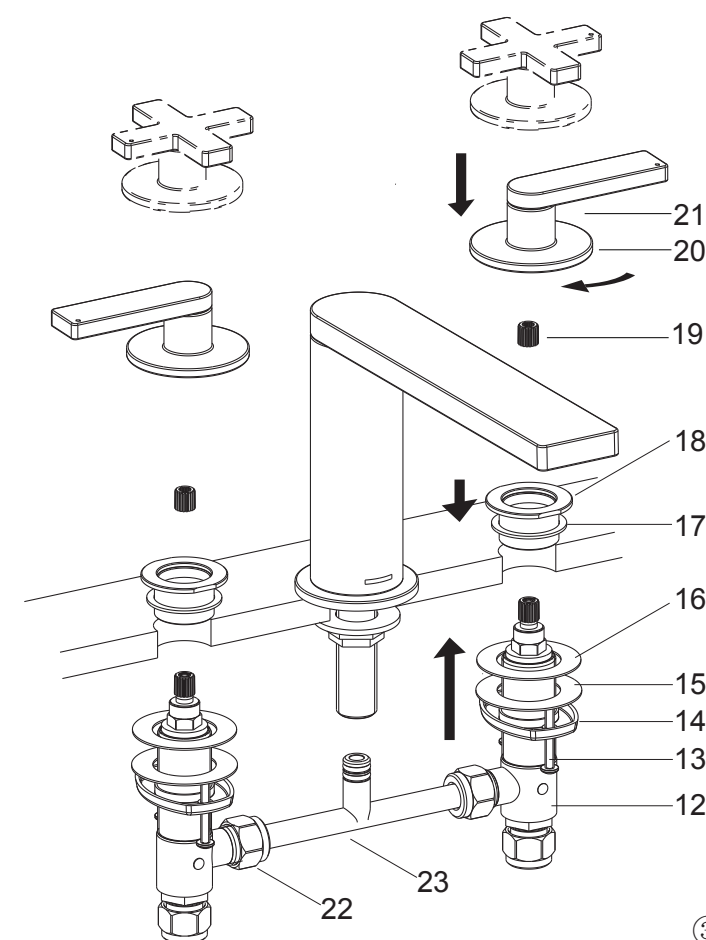
②

Remove the plug(10) with o-ring(11) in the back of spout. Loosen the screw(8) by hex wrench(9).

Install the escutcheon(7) on the shank, contact the deck or bath tub rim.

Install the spout(6) on the escutcheon, and make it against the escutcheon. Position the spout, tighten the screw by hex wrench.

Press the plug into the hole.



③

### How to Install the Side Bodies and Handles

Remove the connectors(18) and washers(17) from side bodies(12). Be sure the washers(16), washers(15) and threaded rings(14) on the valve bodies.

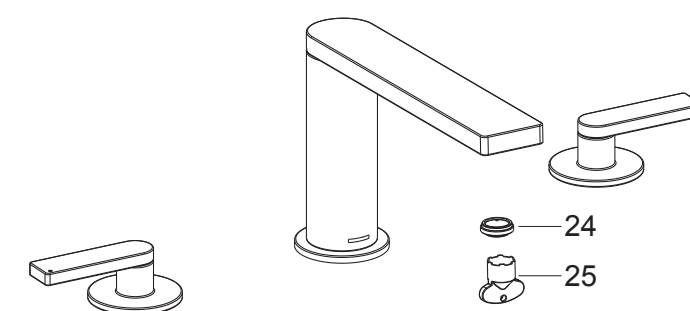
Trim the tee-piece(23) to suit the tub hole centers. Loosen the nuts(22) on the side bodies, and assemble the tee-piece to the side bodies as shown. Tighten the nuts by hand.

From the underside of the tub, install the valve bodies into the mounting holes of tub(**NOTE:** the valve body with red dot should be installed on the left side). Locate the tee-piece onto the spout shank. If the tee-piece cannot be inserted into the shank, you can loosen the nuts(22) by hand, and adjust the tee-piece position. Then tighten the nuts with a wrench.

Put the washers(17) into the bottom groove of the connectors(18). Tighten the connectors onto the valve bodies. Secure the threaded rings(14) by tightening screw(13) with screwdriver.

Press the adapters(19) on the valve stems. Ensure the handles and valves are in the off position. Tighten the escutcheon(20) of the handle kits(21) onto the connectors with the valves closed (**NOTE:** The handle kit with red mark should be installed on the left side).

## INSTALLATION CHECKOUT



Ensure that all connections are tight. Ensure that the handles are in the off position.

Open the drain. Turn on main water supply and check for leaks. Repair as required.

Remove aerator(24) by key(25). Turn the faucet handles on and run hot and cold water through spout for about one minute to remove any debris. Remove any debris from aerator. Shut faucet off and reinstall aerator.

## CLEANING INSTRUCTIONS

All Finishes: Clean the finish with mild soap and warm water. Wipe entire surface completely dry with clean soft cloth. Many cleaners may contain chemicals, such as ammonia, chlorine, toilet cleaner etc, which could adversely affect the finish and are not recommended for cleaning.

Do not use abrasive cleaners or solvents on Kohler faucets and fittings.